



## BRINGING BACK

# THE AMERICAN CHESTNUT TREE and At-Risk Native Plant Species

We invite children, families and the public at large to join Antinanco's stewardship effort to achieve lasting preservation of the American Chestnut Tree (*C. dentata*), currently functionally extinct, and other species native to the Northeastern woodlands. Leaning on the indigenous wisdom, together we can bring these disappearing ancients back to our communities, contributing to the resiliency of the land that we live on.

## THE AMERICAN CHESTNUT TREE

"GRANDFATHER OF THE FOREST"

Cherished by wildlife and humans alike, The American Chestnut tree was once regarded as a pillar of the Northeastern forest and its great biome. However, at the turn of the century, a species of **nearly 4 billion thriving trees** was **decimated to functional extinction** by the accidental introduction of a foreign pathogen that causes a disease known as chestnut blight.

*By taking collective action, we can help the American Chestnut tree reclaim its rightful place in the structure and composition of the native landscape.*

## A HOLISTIC PRESERVATION SOLUTION

Bringing Back the American Chestnut Tree is an ongoing project that began in 2018. Our mission is to revive the population without genetically altering the species. Our approach is 3-fold:

### ✓ PLANTING & DISTRIBUTION

We plant American Chestnut trees that come from five genetic sources (three pure and two hybrid) across six project sites. Along with the Chestnut tree, we plant nitrogen-fixing companion plants and other at-risk species that are currently in decline due to land development and degraded soil conditions. We also offer seedlings for the community to plant in their local parks and gardens.

### ✓ CARE, MAINTENANCE & RESEARCH

With the help of our science team and reforestation experts, we monitor and care for the existing trees. We also research new methods to address blight and other environmental factors impacting the trees' health and mortality. Our findings are published for peer review each year and made accessible to the conservation community.

### ✓ EDUCATION & COMMUNITY INVOLVEMENT

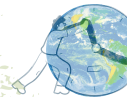
Planting and tending the trees offers participants a way to contribute to our communities' resiliency while also learning how to come into Right Relation with the natural world. We know that fostering this sense of interconnectedness is crucial for the well-being of Earth and all her inhabitants. So, we have made community involvement central to this project. Participants join us for planting and maintenance events, field-based conservation experiences, educational events, and celebrations of Earth. Trained to be "citizen scientists," youth and community groups work alongside our team and collect meaningful data on trees' health and growth. Participants also take trees back to their communities to share the experience of planting and caring for the trees with their peers.

## BENEFITS OF REVIVAL



*Thousands of forest species* who have declined in population since the tree's functional demise **will repopulate**. The tree was a significant source of food and shelter for forest dwellers.

Many Indigenous communities value the chestnut tree for its **healing properties** and also use it as a **food source**.



**Turn back the clock on global warming.** The American chestnut tree has the ability to sequester substantially more carbon from the atmosphere than most other forest species.



## OUR IMPACT

600+ children received educational instruction and lesson plans!  
2500+ children accessed resources virtually!  
40+ successful community workshops held!  
Field Course Manual Published | Tree Care Guidelines Developed

*Our participants report a deeper connection with the natural world, an appreciation of the diminished species, and a dedication to environmental stewardship.*

## HELP US GROW!

We want to expand in 2023. Your donation will help us:

### RESEARCH

- Natural solutions to support the tree's resistance to blight so the species is preserved for generations to come!

### EDUCATE

- Distribute 250 more lesson plans
- Train 30+ Citizen Scientists
- Offer new course work
- Hold 25+ events

### PLANT + CARE

- 30+ Trees
- 200+ Plants
- Maintain 6 Sites

### SHARE

- 100+ trees to be planted in local communities

### ENGAGE

- 300+ Participants

## OUR PARTNERS

